



BIOT-YG-I

FIA Analyzer Immunoassay



BIOT-YG-I FIA Analyzer

BIOT-YG-I FIA Analyzer is a fluorescence immunoassay analysing system which can help diagnose conditions such as cardiovascular diseases, pregnancy, infection, diabetes, renal injury and cancers, etc

BIOT-YG-I platform provides reliable and quantitative results of various kinds of analytes in human blood and urine within several minutes.

Application: Cardiology, er, icu, Respiratory, Pediatrics, Laboratory, etc.

Test item

Cardiac

cTnl, Myo, CK-MB, h-FABP,
D-Dimer, NT-proBNP,
3 in 1 (cTnl+Myo+CK-MB+
5 in 1 (cTnl-Myo+CK-MB+
NT-proBNP+D-Dimer)

Tumor

AFP, CEA, tPSA, fPSA

Infection

PCT, CRP (hsCRP+CRP)
SAA
CRP/SAA (2 in 1)

Diabetes & renal injury

HbA1c, MAU, NGAL, Cys-C

Others

Ferritin
Total IgE
25-OH, 25-OH-VD3

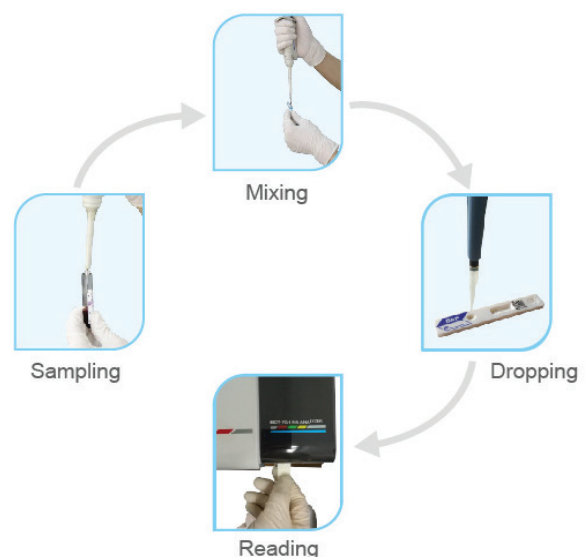
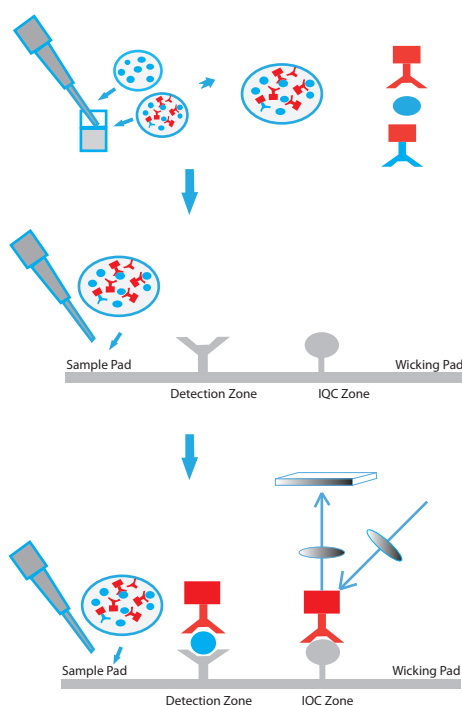
Gastrointestine

PG1, PG2, PG1/PG2 (2 in 1) Tg,
Tgab, 2 in 1 (CEA/AFP)

Hormone

B-hCG, PROG,
FSH, LH, PRL
3 in 1 (FSH+LH+PRL)
TES, E2, AMH
FT3, FT4
TSH, TT4, TT3

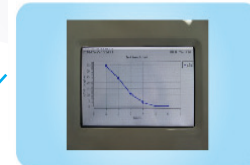
Principle and Operation



Why Choose BIOT-YG



Easy to input patient information



Help doctor prognose according to trend tracking

Trend tracking

Patient information input

Constant temperature control

strong compatibility

Emergency battery



Make test result accurate and stable

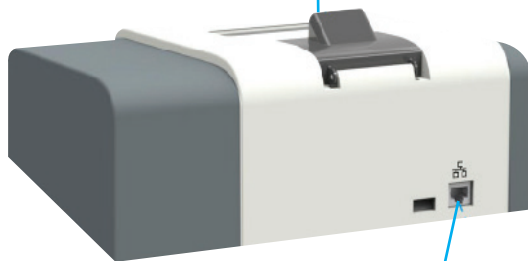


Developed for all BIOTIMES'S products



Equipped with battery for power failure of ambulance

Built-in Thermal Printer
Real-time printing



LIS Connection
Direct connection to LIS/HIS

4.3" LCD Touch Screen

Dimensions:
280(L) x 256(W) x 102(H)mm

Weight:
2.9kg
Power adapter:
100-240AC,50-60Hz



Test Channel
The Test Cartridge Holder

SD Card
The SD Card contains all information of test item and lot number

BIOT-YG- II Test Markers

Product class	Test item	Diseases	Specimen Type	Reaction Time	Linear Range	Clinical Reference	Quanlification
Cardiac	cTnl	Myocardial infarction	Serum/Plasma	15mins	0.05-50ng/ml	0-0.3ng/ml	CFDA ISO13485
	Myo	Myocardial infarction	Serum/Plasma	15mins	2.5-400ng/ml	0-0.5ng/ml	CFDA ISO13485
	CK-MB	Myocardial infarction	Serum/Plasma	15mins	1-80ng/ml	0.5ng/ml	CFDA ISO13485
	3 in 1 (ctrl/myo/CK-MB)	Myocardial infarction	WB/Plasma	15mins	The same as single items	The same as single items	CFDA ISO13485
	5 in 1 (ctrl/myo/CK-MB D-Dimer/NT-proBNP)	Myocardial infarction	WB	15mins	The same as single items	The same as single items	CFDA ISO13485
	D-Dimer	Thrombosis	WB/Plasma	15mins	0.1-10ng/ml	0-0.55ng/ml	CFDA ISO13485
	NT-proBNP	Heart Failure	WB/Serum/Plasma	15mins	15-35000pg/ml	>75y 300pg/mL >75y 450pg/mL	CFDA ISO13485
hF-ABP	Myocardial infarction		15mins	2-120ng/ml	0-7ng/mL	CFDA ISO13485	
Tumor	AFP	Cancer	Serum/Plasma	10mins	3-2000ng/ml	0-10ng/ml	CFDA ISO13485
	CEA	Cancer		10mins	1-500ng/mL	0-5ng/mL	CFDA ISO13485
Infection	PCT	Sepsis	WB/Serum/Plasma	15mins	0.1-100ng/ml	0-0.5ng/ml	CFDA ISO13485
	hs-CRP/CRP	Sepsis		3mins	0.5-200ng/L	CRP:0-10mg/L	CFDA ISO13485
Hormone	β-hCG	Fertility	Serum/Plasma	10mins	5-200000mIU/ml	0-10mIU/ml	CFDA ISO13485
	PROG	Fertility	Serum	10mins	1-80ng/mL	Man NG-1.4 FP NG-1.5 OP 0.8-3.0 LP 1.7-27.0 MP NG-0.8 ETP 8.6-49.36 STP 12.5->80 LTP 59.62->80	CFDA ISO13485
	TSH	Thyroid Malfunction	Serum/Plasma	20mins	0.4-100μ IU/ml	0.5-5.0μ IU/mL	CFDA ISO13485
	TES	Fertility	Plasma	10mins	0.5-20ng/mL	Female 0.27-0.95ng/mL male 2.6-1.45ng/mL	CFDA ISO13485
	TT3	Thyroid Malfunction	Plasma	15mins	0.8-10nmol/l	1.3-3.1nmol/L	CFDA ISO13485
	TT4	Fertility	Serum	15mins	20-320nmol/L	66-181nmol/L	CFDA ISO13485
	3in1 SH/LH/PRL)	Infertility	Serum/Plasma	20mins	The same as single items	The same as single items	CFDA ISO13485
	FSH	Infertility	Serum	20mins	0.3-200mIU/mL	Man NG-1.4 FP NG-1.5 OP 0.8-3.0 LP 1.7-27.0 MP NG-0.8	CFDA ISO13485
	LH	Infertility	Serum	20mins	1-200mIU/mL	Man 1.5-9.25 FP 1.25-11.80 OP 13.15-94.75 LP 1.05-14.50 MP 7.70-64.20	CFDA ISO13485
	PRL	Infertility	Serum	20mins	1-4000μIU/mL	man 86.30-425.72μiu/mL Women 72.55-600.40μim/mL	CFDA ISO13485
	3in1 SH/LH/PRL)	Infertility	Serum	20mins	The same as single items	The same as single items	CFDA ISO13485
Diabetes & Renal injury	HbA1c	Datebtos Mellitus	WB	5mins	4-15%	4-7%	CFDA ISO13485
	MAU	Renal Injury	Urine	10mins	0-300mg/l	0-20mg/l	CFDA ISO13485

MOGADISHU OFFICE

+252 61 5000491
+252 1 656503

HARGEISA OFFICE

+252 63 4440909
+252 2 512422

GAROWE OFFICE

+252 90 7742425
+252 90 7662918

DJIBOUTI OFFICE

+253 77 021504
+253 77 189595